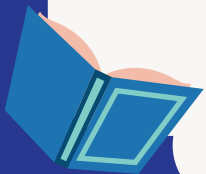




Alphabet Activities

Table of Contents

| | |
|-----------------------------|---------|
| Matching letters | Page 2 |
| Missing letters | Page 9 |
| Color bubble letters | Page 17 |
| Trace letters | Page 22 |
| Circle the letters | Page 28 |
| Dot to dot | Page 35 |
| Color by letter codes | Page 38 |
| Alphabet posters | Page 41 |



Match the uppercase letter to its lowercase :



Cake

C •

• a



Elephant

E •

• d



Balloon

B •

• c



Apple

A •

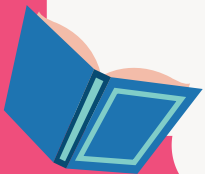
• b



Donut

D •

• e



Match the uppercase letter to its lowercase :



Hand

H



j



Jellyfish

J



i



Fish

F



g



Ice cream

I



h

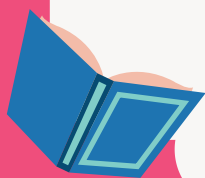


Gift

G



f



Match the uppercase letter to its lowercase :



Lemon

L •

• k



Olive

O •

• m



Kiwi

K •

• n



Nail

N •

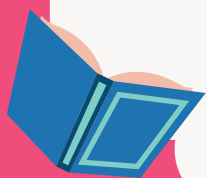
• o



Mouse

M •

• l



Match the uppercase letter to its lowercase :



Snake

S •

• r



Queen

Q •

• p



Pineapple

P •

• t



Tree

T •

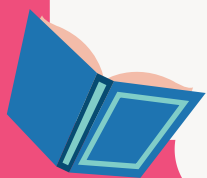
• s



Rocket

R •

• q



Match the uppercase letter to its lowercase :



W ●

● y



V ●

● X



Y ●

● W



U ●

● Z



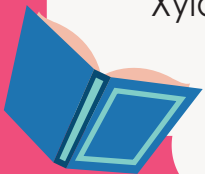
Z ●

● V



X ●

● U



Match the uppercase letter to its lowercase :

- A ●
- B ●
- C ●
- D ●
- E ●
- F ●
- G ●
- H ●
- I ●
- J ●
- K ●
- L ●
- M ●

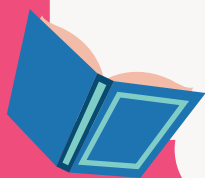
- e
- g
- f
- C
- i
- k
- b
- a
- m
- d
- j
- h
- l



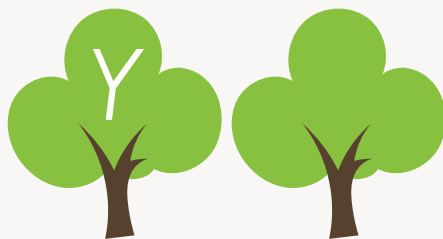
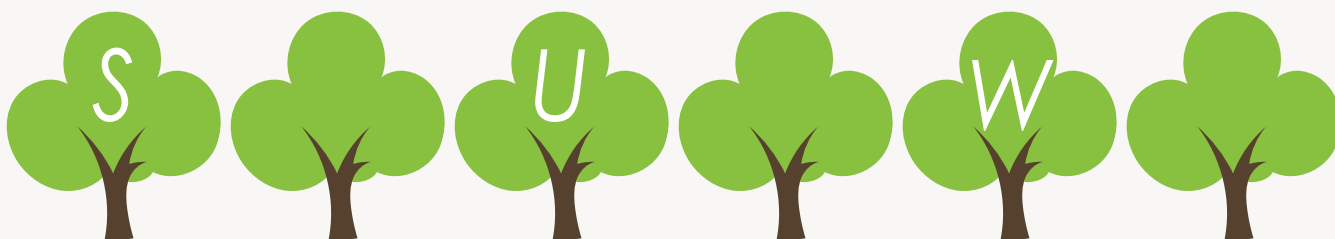
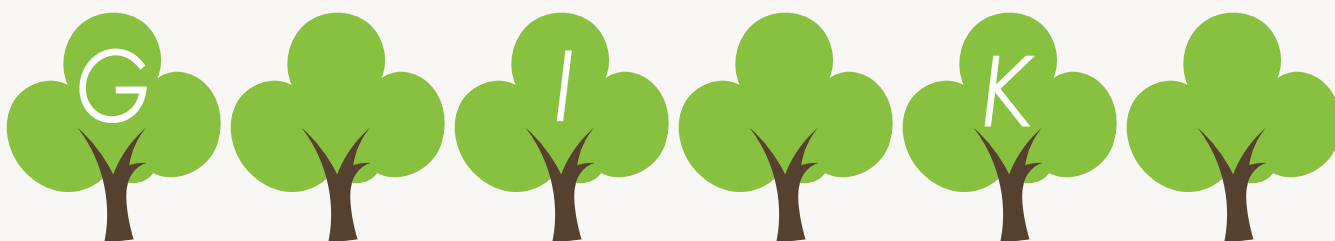
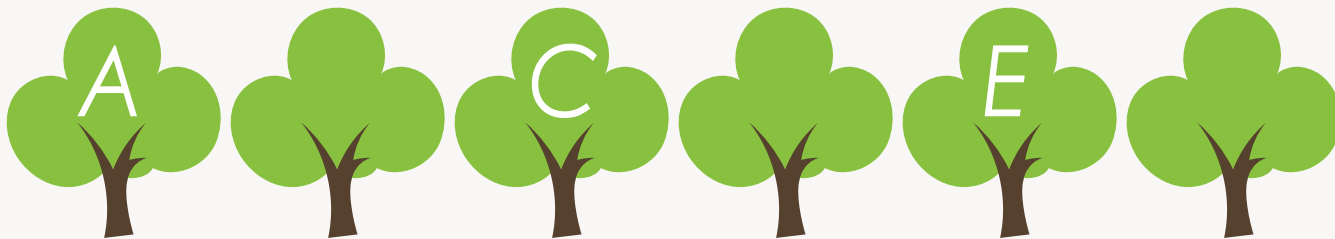
Match the uppercase letter to its lowercase :

- N ●
- O ●
- P ●
- Q ●
- R ●
- S ●
- T ●
- U ●
- V ●
- W ●
- X ●
- Y ●
- Z ●

- p
- r
- v
- y
- U
- O
- w
- x
- n
- q
- z
- t
- s



Fill in the missing letter :



Finish the alphabet :

| | | |
|----|----|----|
| Aa | | Cc |
| | Ee | |
| Gg | | li |



Aa Ee Bb
Ff Hh Dd
Cc li Gg



Fill in the missing letters :

| | | |
|----|----|----|
| Jj | | Ll |
| | Nn | |
| Pp | | Rr |



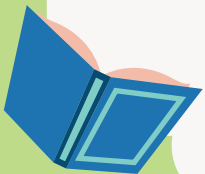
Fill in the missing letters :

| | | |
|----|----|----|
| Rr | | Tt |
| | Vv | |
| Xx | | Zz |



Fill in the missing letters :

| | |
|-----------|-----------|
| ___ B C | a ___ c |
| D ___ F | ___ e f |
| ___ H ___ | g ___ i |
| J K ___ | ___ k ___ |
| M ___ O | ___ n ___ |
| ___ ___ R | p ___ r |
| S ___ U | ___ t ___ |
| V ___ X | ___ w x |
| ___ Z | ___ Z |



Fill in the missing letters :



QUEEN



...ISH



...AKE



...EMON



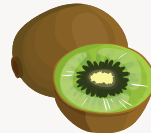
...REE



...IFT



...ATERMELON



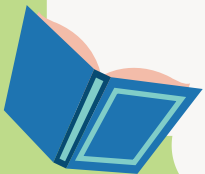
...IWI



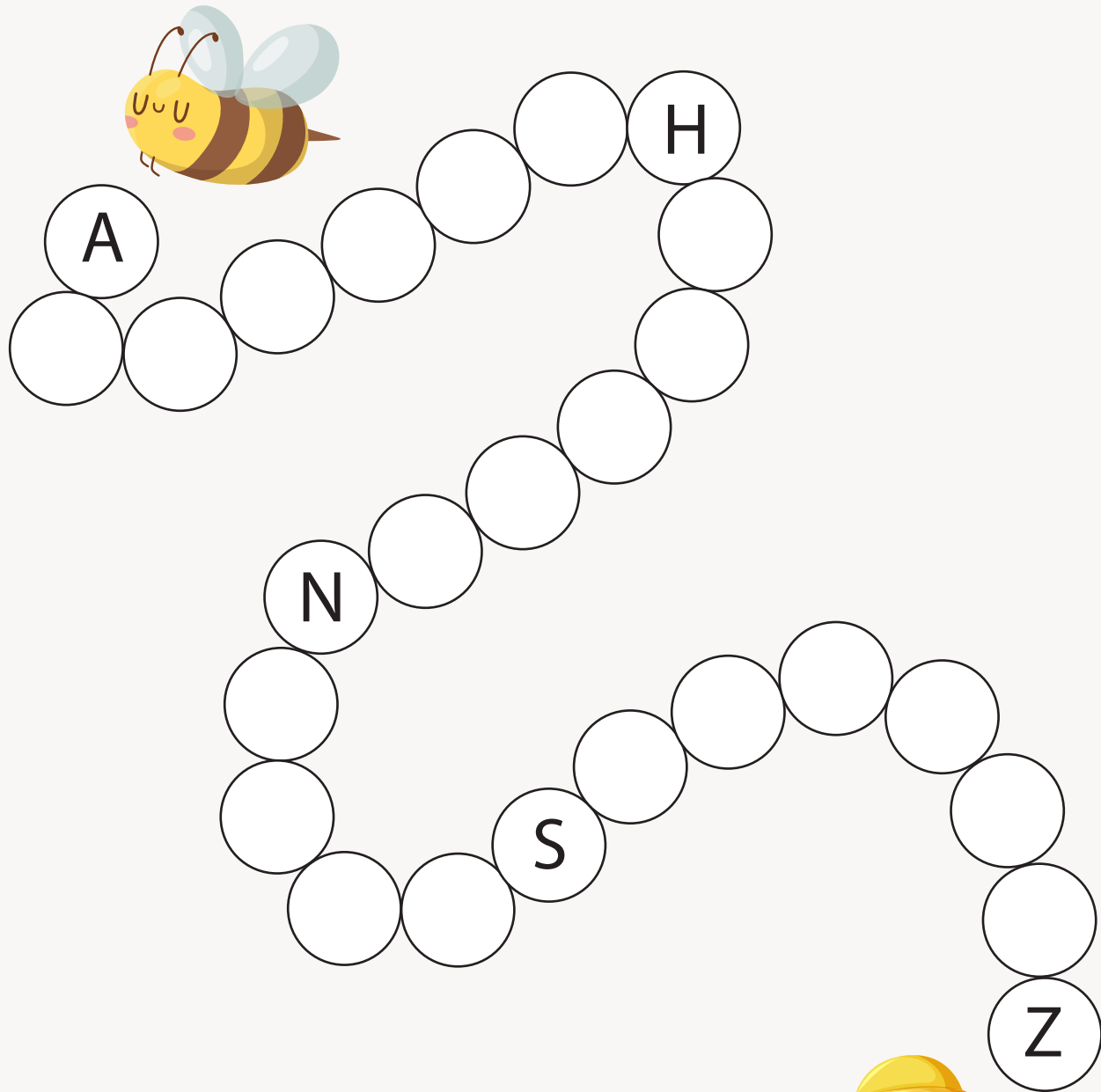
...PPLE



...MBRELLA



Fill in the missing letters :



Fill in the missing letters :

| | | | | | |
|----------|--|--|--|--|--|
| a | | | | | |
|----------|--|--|--|--|--|

| | | | | | |
|--|--|--|--|--|----------|
| | | | | | g |
|--|--|--|--|--|----------|

| | | | | | |
|--|--|--|--|--|--|
| | | | | | |
|--|--|--|--|--|--|

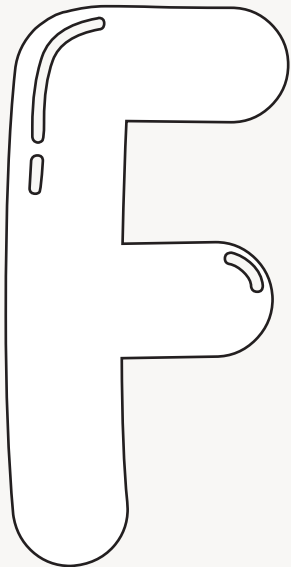
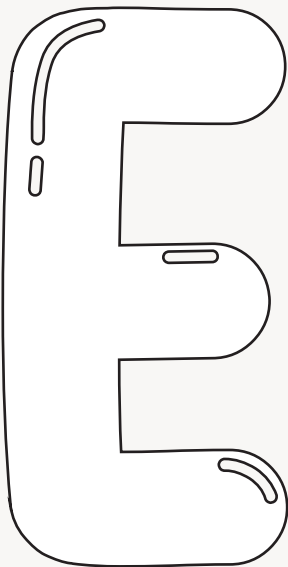
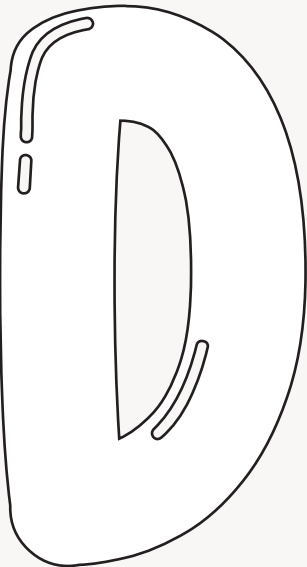
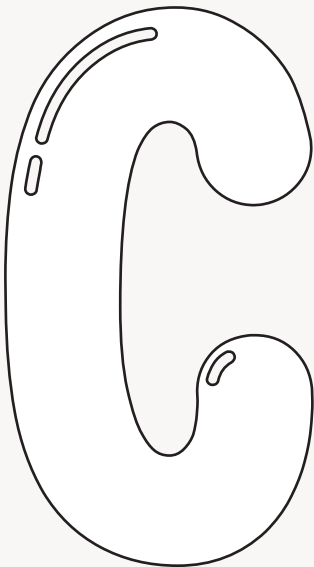
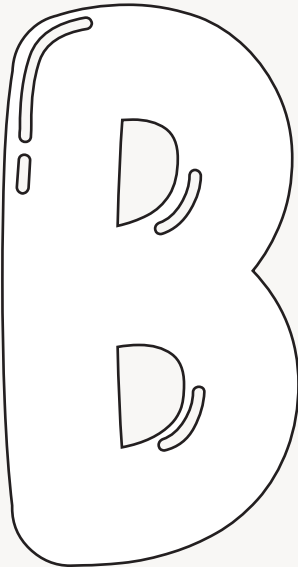
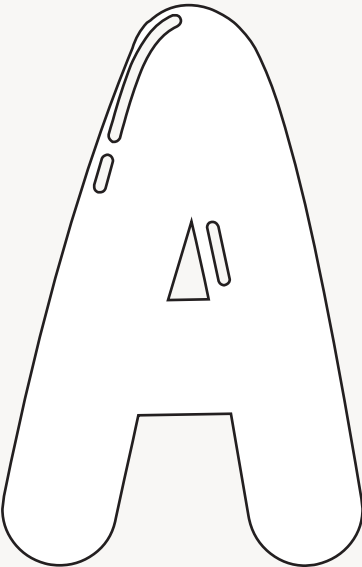
| | | | | | |
|----------|--|--|--|--|--|
| n | | | | | |
|----------|--|--|--|--|--|

| | | | | | |
|--|--|--|----------|--|--|
| | | | r | | |
|--|--|--|----------|--|--|

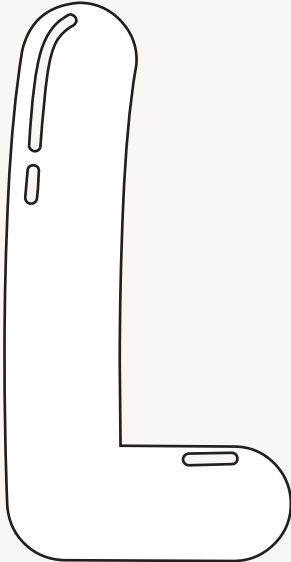
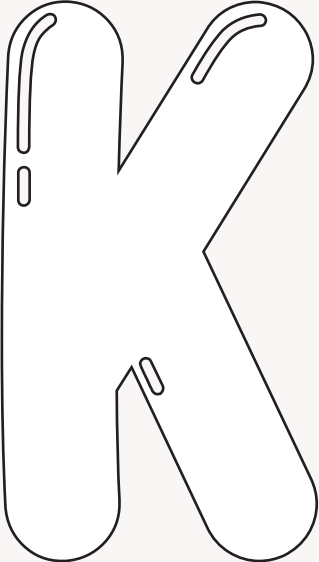
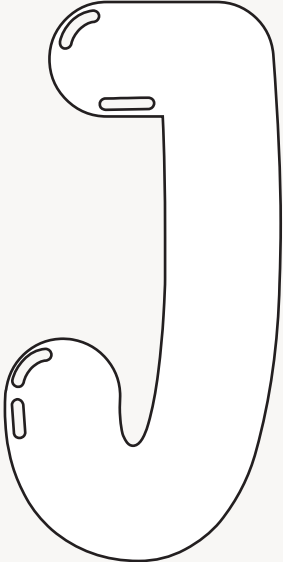
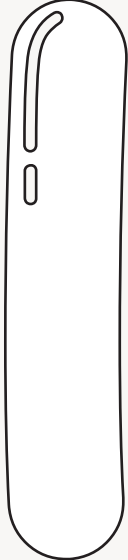
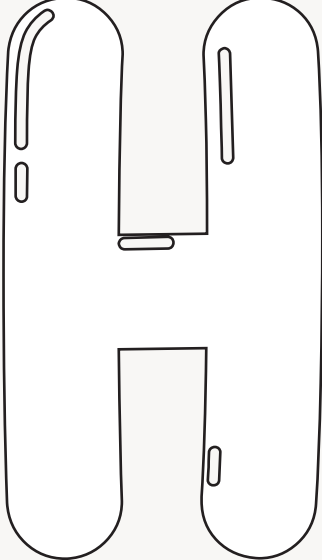
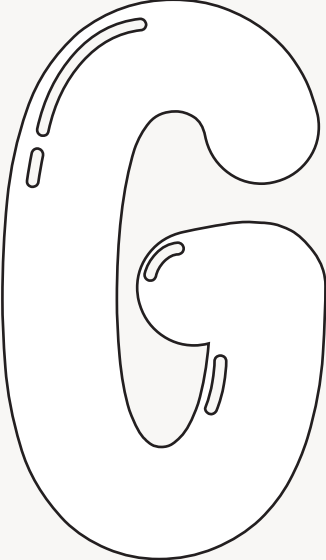
| | | | | | |
|--|--|--|--|--|--|
| | | | | | |
|--|--|--|--|--|--|

| | | | | |
|----------|--|--|--|--|
| z | | | | |
|----------|--|--|--|--|

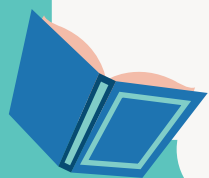
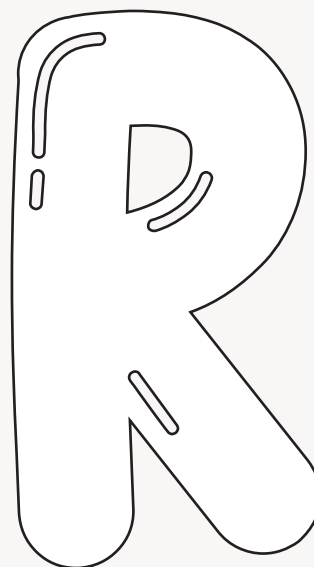
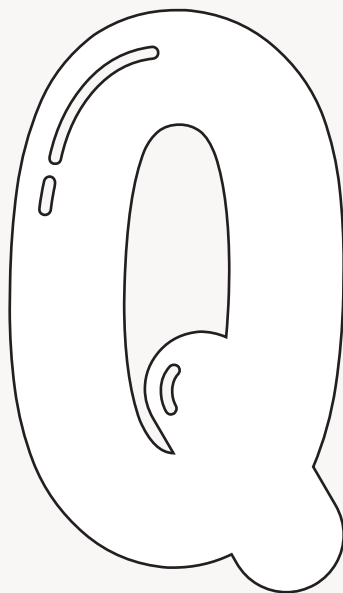
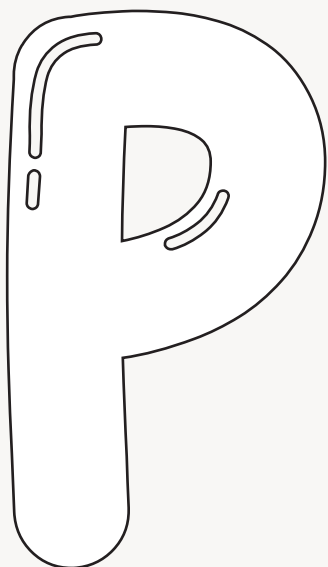
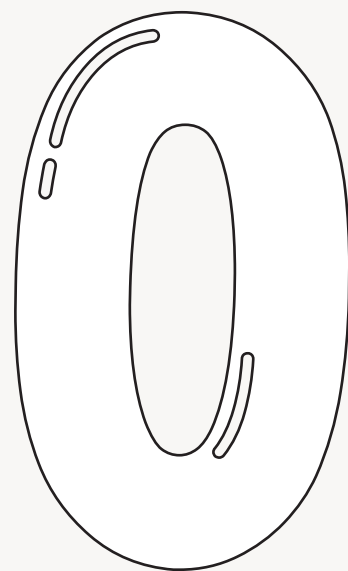
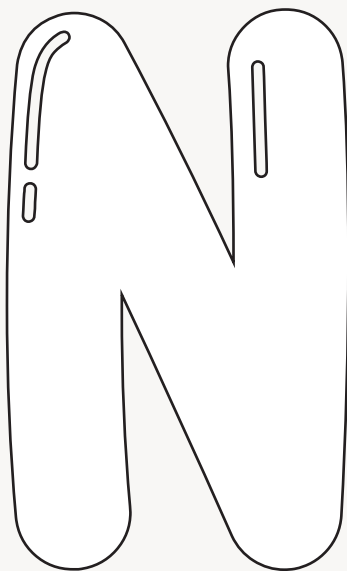
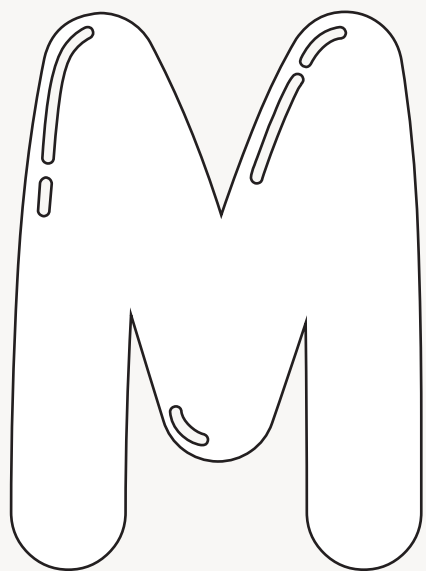
Color the bubble letters with the color bellow :



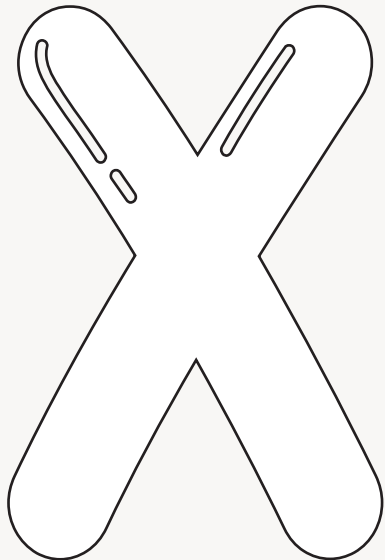
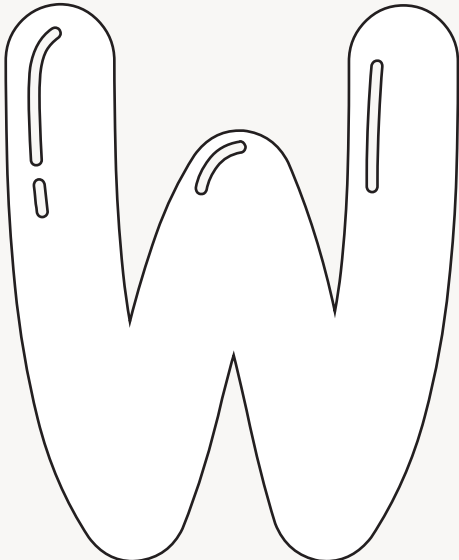
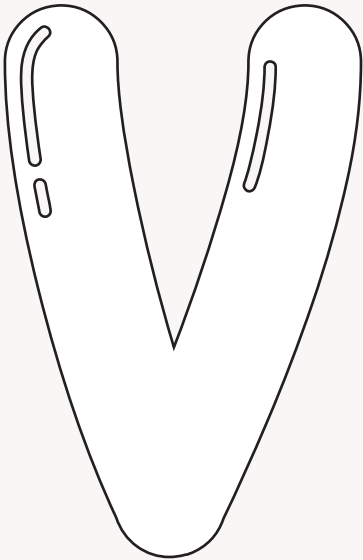
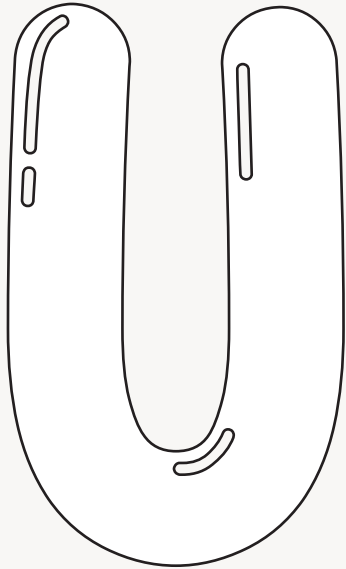
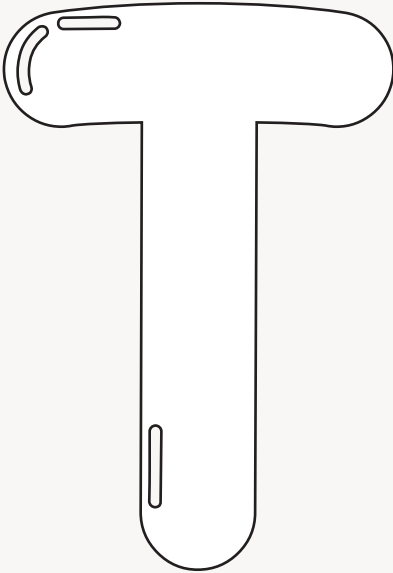
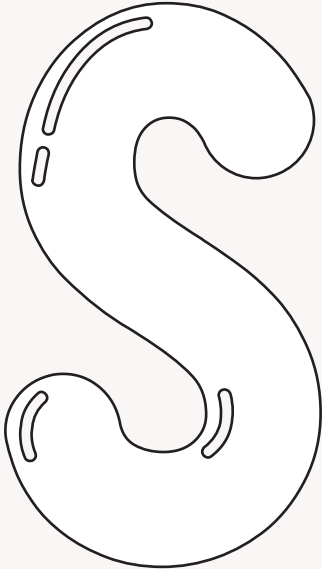
Color the bubble letters with the color bellow :



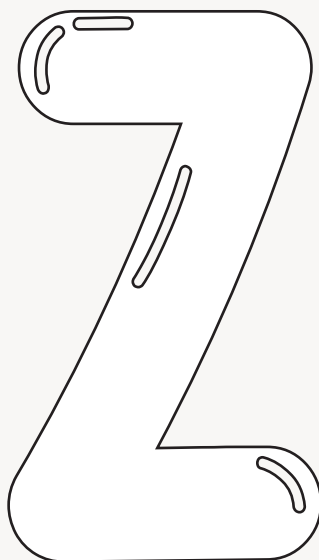
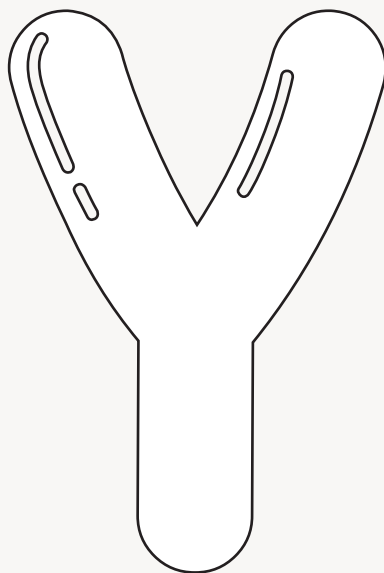
Color the bubble letters with the color bellow :



Color the bubble letters with the color bellow :



Color the bubble letters with the color bellow :



Trace the alphabet :



A

B

C

D

E

F

G

H

I

J

K

L

M

N

O

P

Q

R

S

T

U

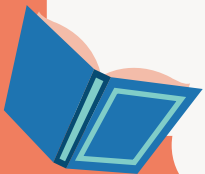
V

W

X

Y

Z

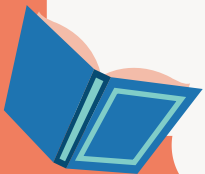


Trace the alphabet :

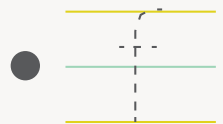
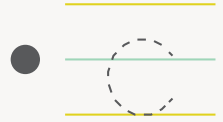
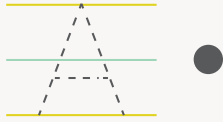


Handwriting practice lines for tracing the alphabet. The page features ten rows of horizontal lines, each with a central dashed line. The letters are arranged as follows:

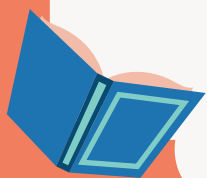
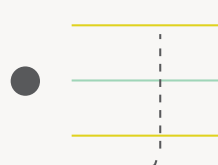
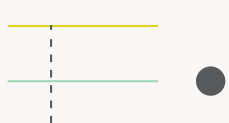
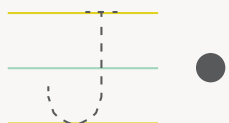
- Row 1: a, b, c, d, e
- Row 2: f, g, h, i, j
- Row 3: k, l, m, n, o
- Row 4: p, q, r, s, t
- Row 5: u, v, w
- Row 6: x, y, z



Trace and match the alphabet :



Trace and match the alphabet :



Trace and match the alphabet :

M •

N •

O •

P •

Q •

R •

S •

• O

• q

• m

• p

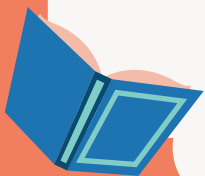
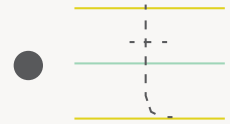
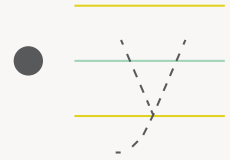
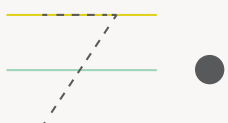
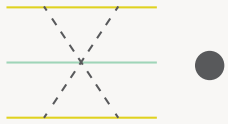
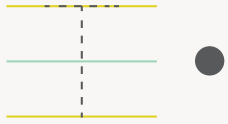
• s

• n

• r



Trace and match the alphabet :



Circle the matching lowercase letter in each row :

A ■ a n j d k

B ■ b f e z s

C ■ m c v e a

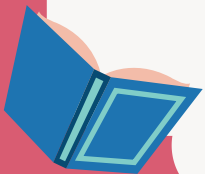
D ■ a z w d p

E ■ e l h m a

F ■ b d s m f

G ■ o g a d y

H ■ d v k h z



Circle the matching lowercase letter in each row :

I ■ b a i f t

J ■ e j i a o

K ■ k d e a c

L ■ f s q d l

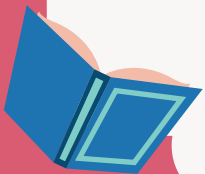
M ■ a z h m n

N ■ y n l m p

O ■ o t g u y

P ■ b i k p y

Q ■ w b q h r



Circle the matching lowercase letter in each row :

R ■ r e j g a

S ■ z c t a s

T ■ i t k y a

U ■ o t g h u

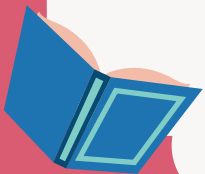
V ■ h n v z r

W ■ w v b g p

X ■ b i k x p

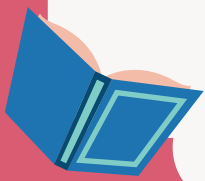
Y ■ w a r p y

Z ■ b z i g o

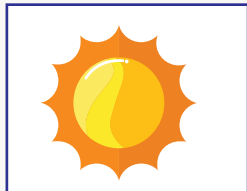


Circle lowercase letters :

A large circle with a dashed red border contains the following letters: G, b, C, m, A, D, e, E, y, P, F, M, d, B, i, n, J, H, h, j, H, e, f, a, d, H.



Circle the beginning sound for each picture :



S N



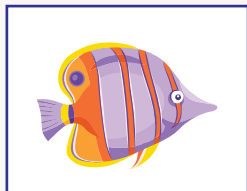
C O



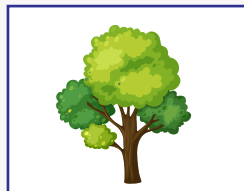
U A



R B



F Z



A T



P J



T B



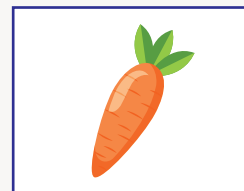
E H



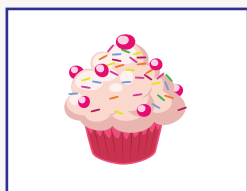
I L



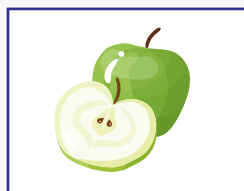
G D



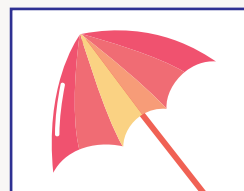
O C



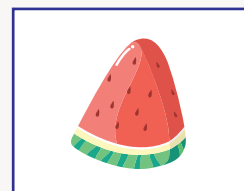
S C



A E



N U



V W

Circle the beginning sound for each picture :



N S Q



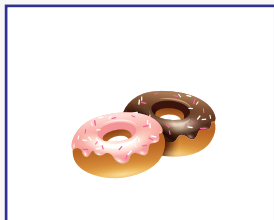
M D H



V J B



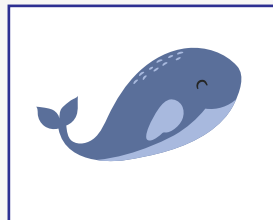
V J B



R D F



I O H



E W P



N L K



M S T



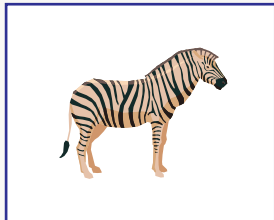
A Q P



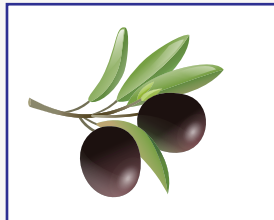
L X U



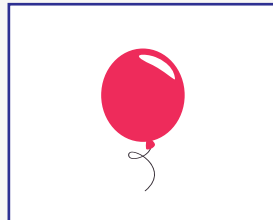
C L E



Z W X



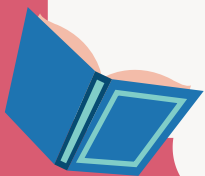
L O R



G E B



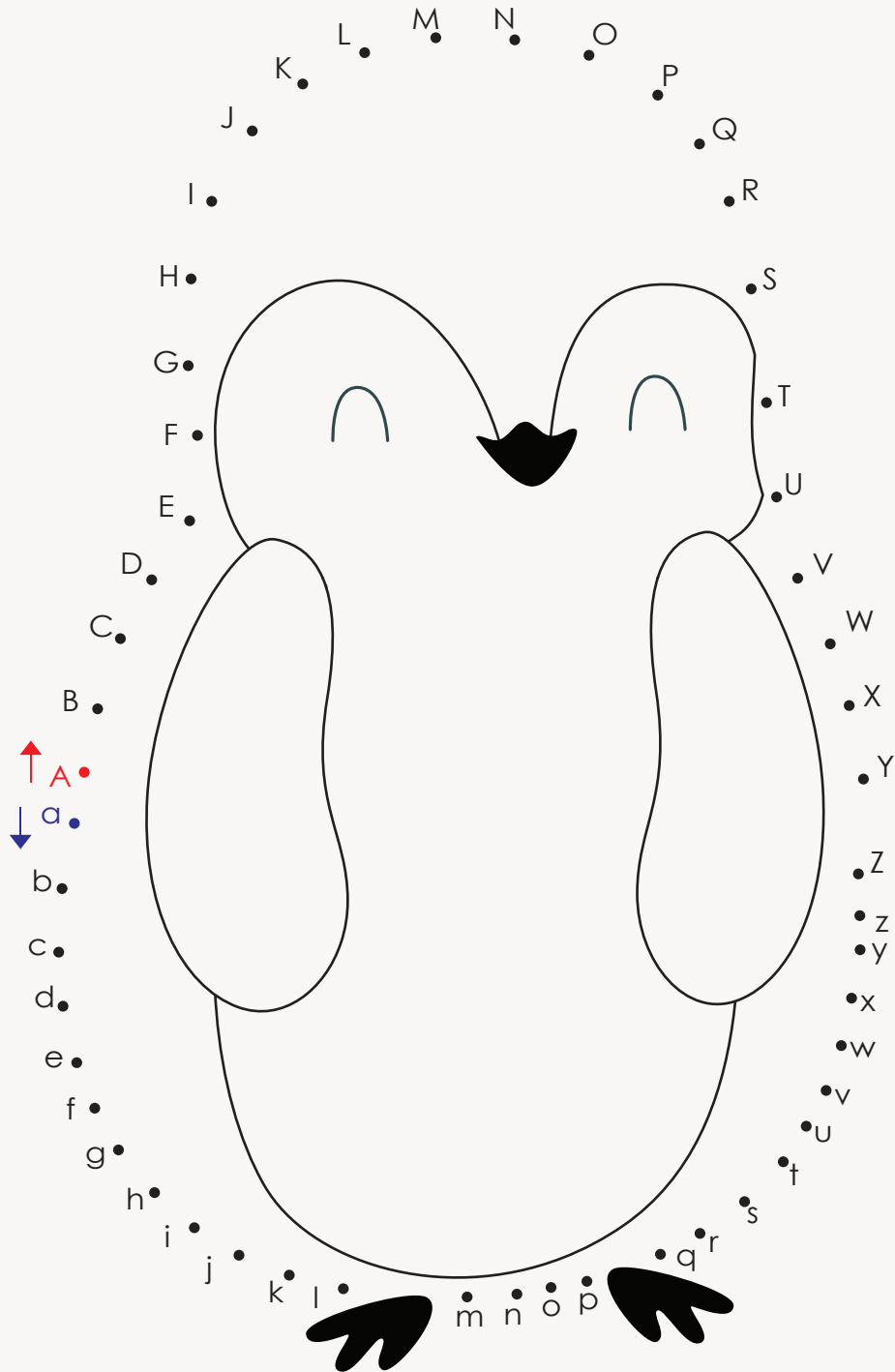
K T H



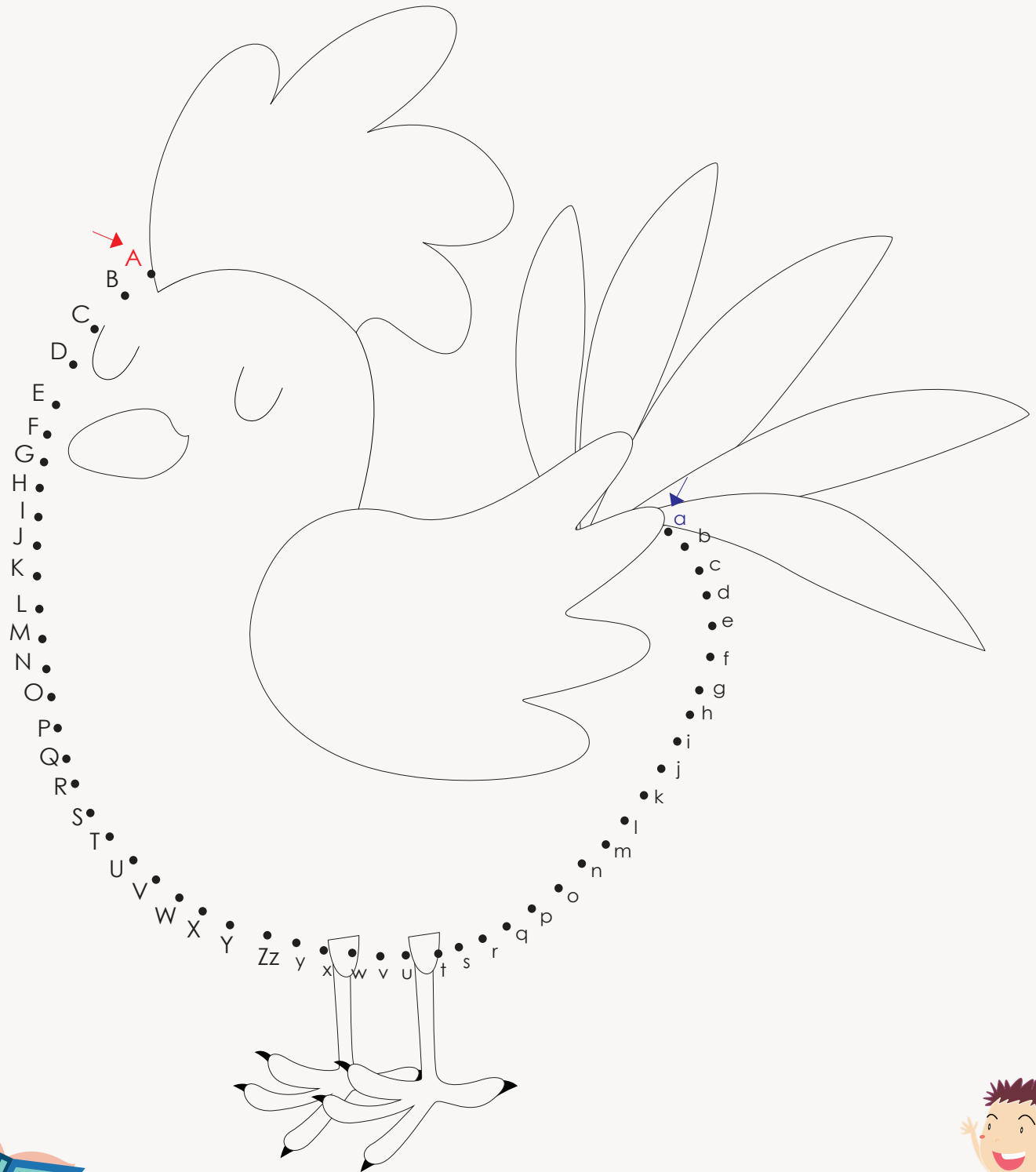
Circle the matching letters :

| | | | | | | | |
|----------|---|---|---|---|---|---|---|
| a | a | b | a | a | o | s | v |
| b | e | n | a | b | g | b | b |
| c | c | e | c | z | c | e | o |
| f | f | f | i | l | f | e | h |
| g | b | g | d | g | e | g | d |
| h | n | h | f | h | n | h | h |
| k | k | k | g | k | h | l | k |
| i | u | i | k | i | i | j | l |
| m | p | m | w | m | q | n | m |
| p | p | a | p | q | p | o | p |
| q | q | p | c | h | q | s | q |
| u | v | u | w | n | u | u | p |
| v | v | w | a | a | v | u | v |
| z | u | z | u | z | z | t | e |

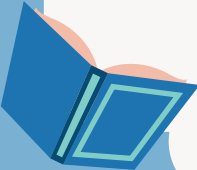
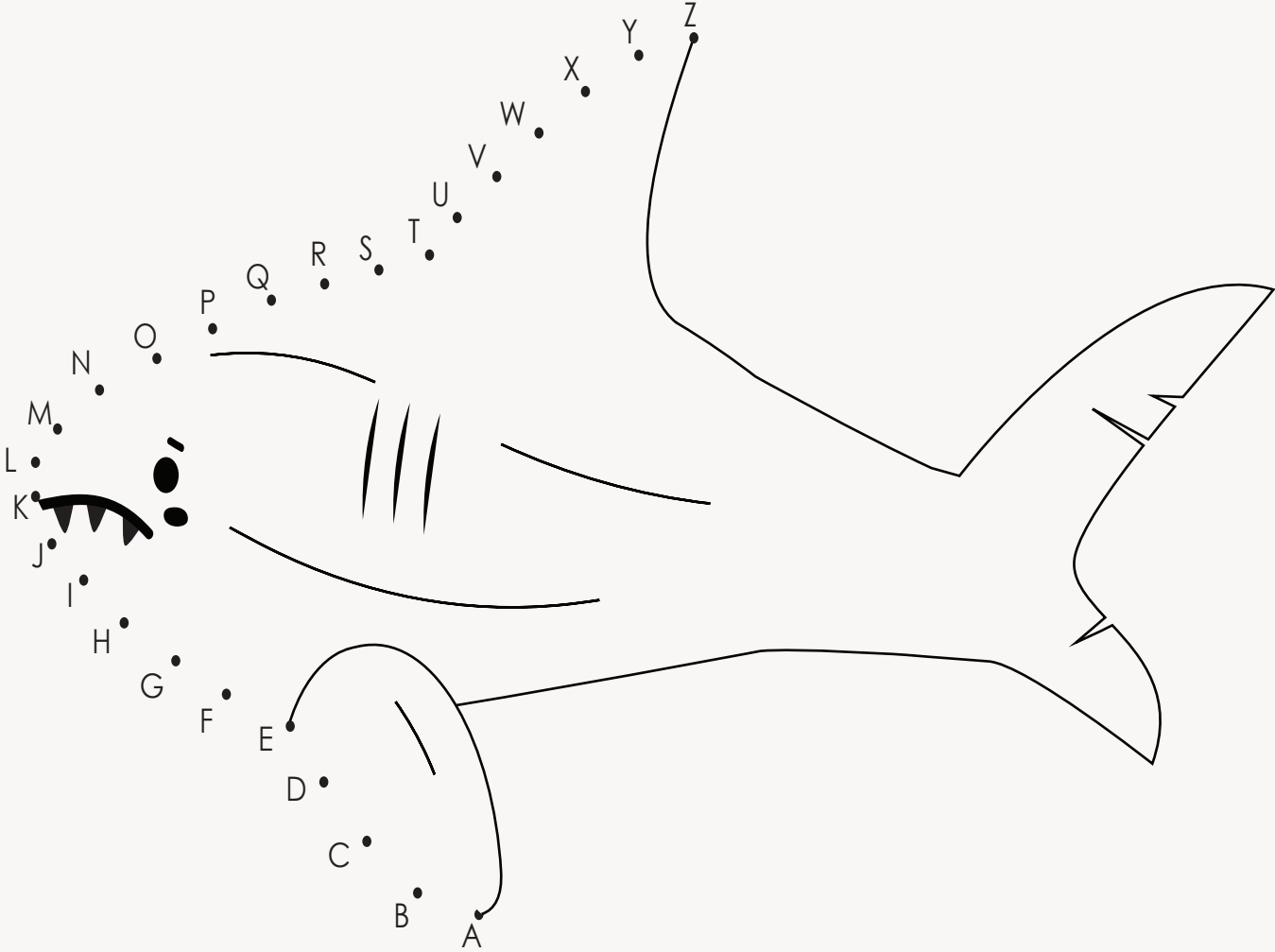
Connect the dots (A to Z) and (a to z) :



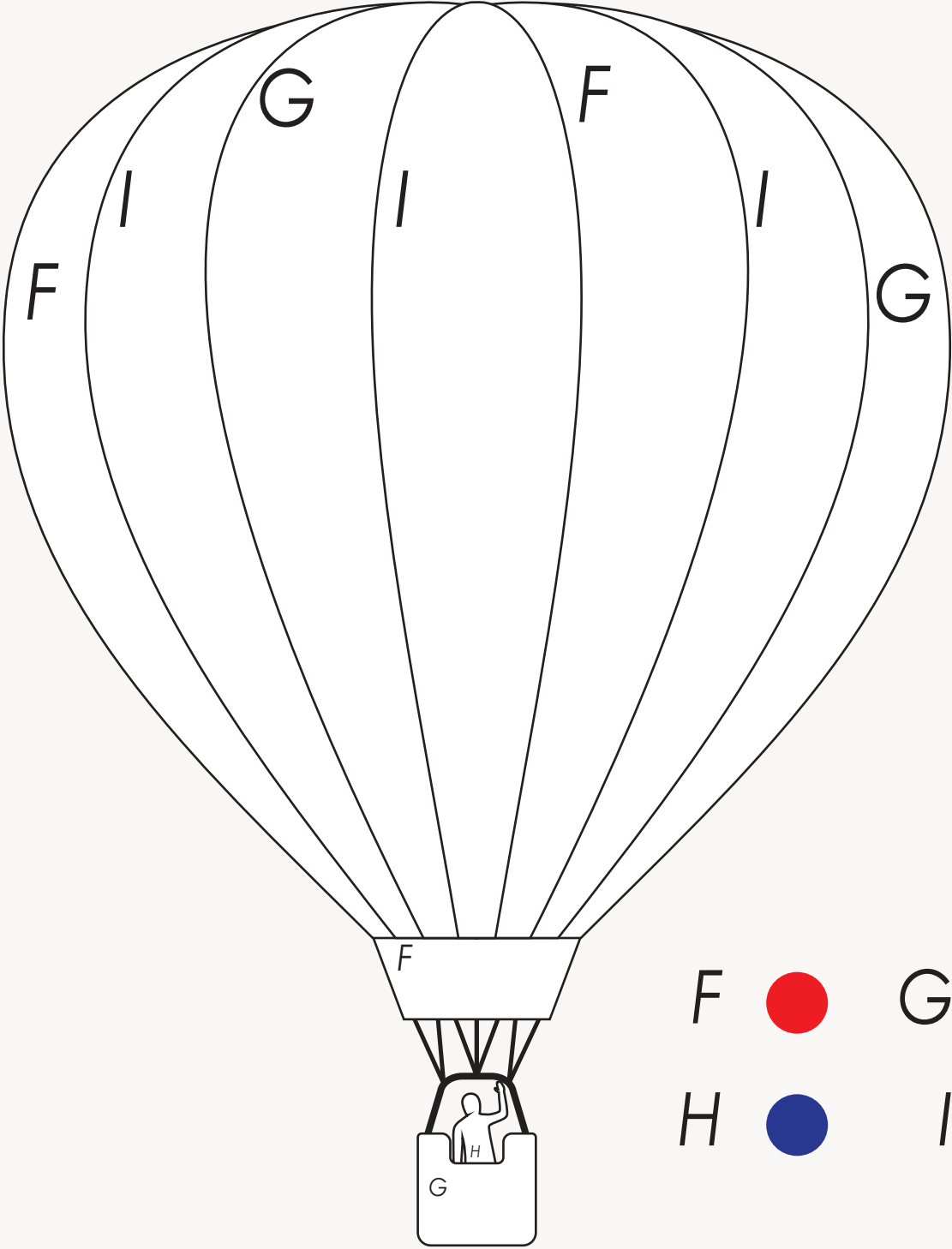
Connect the dots (A to Z) and (a to z) :



Connect the dots (A to Z) :



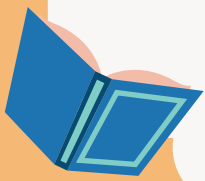
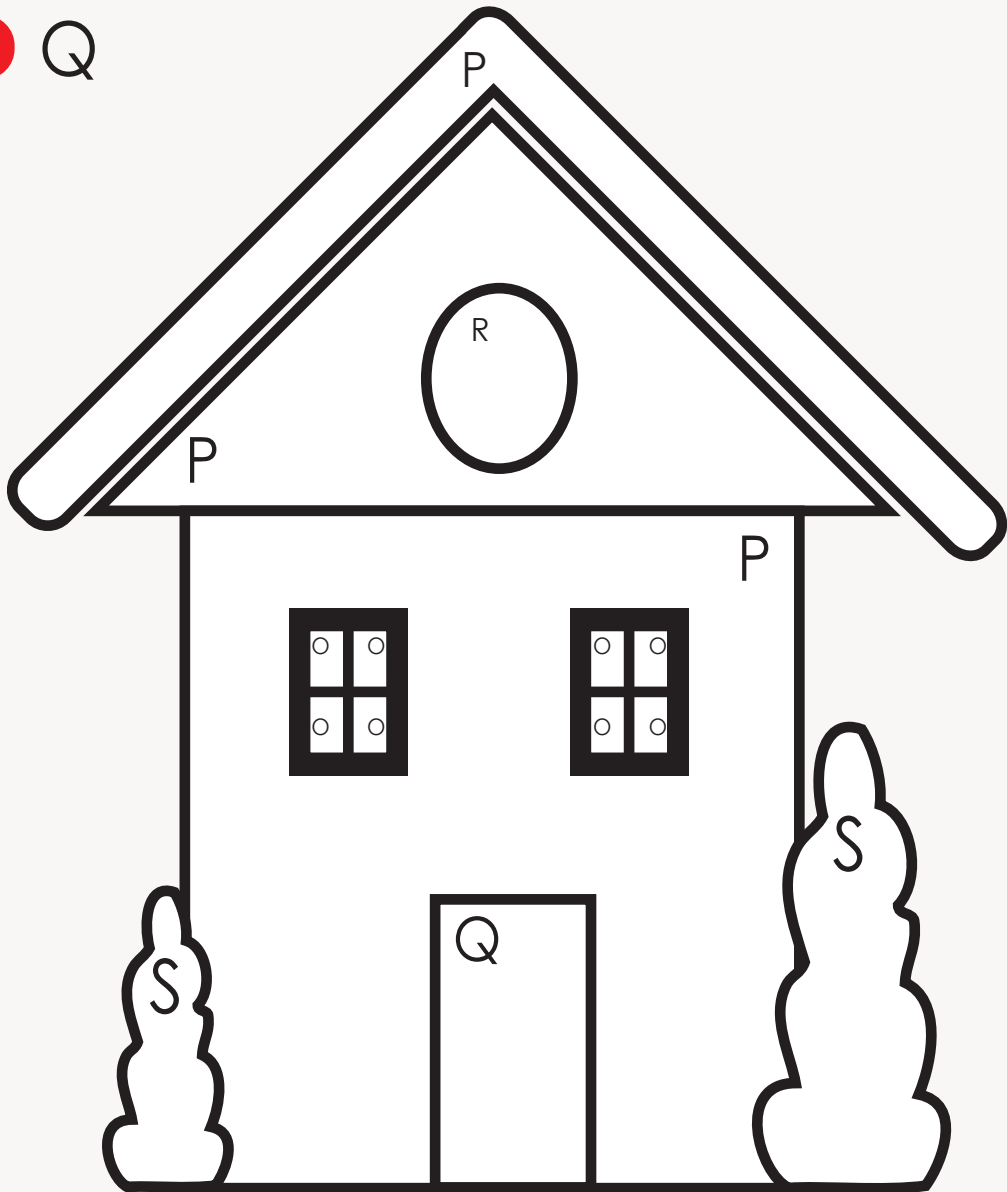
Color the balloon :



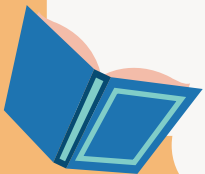
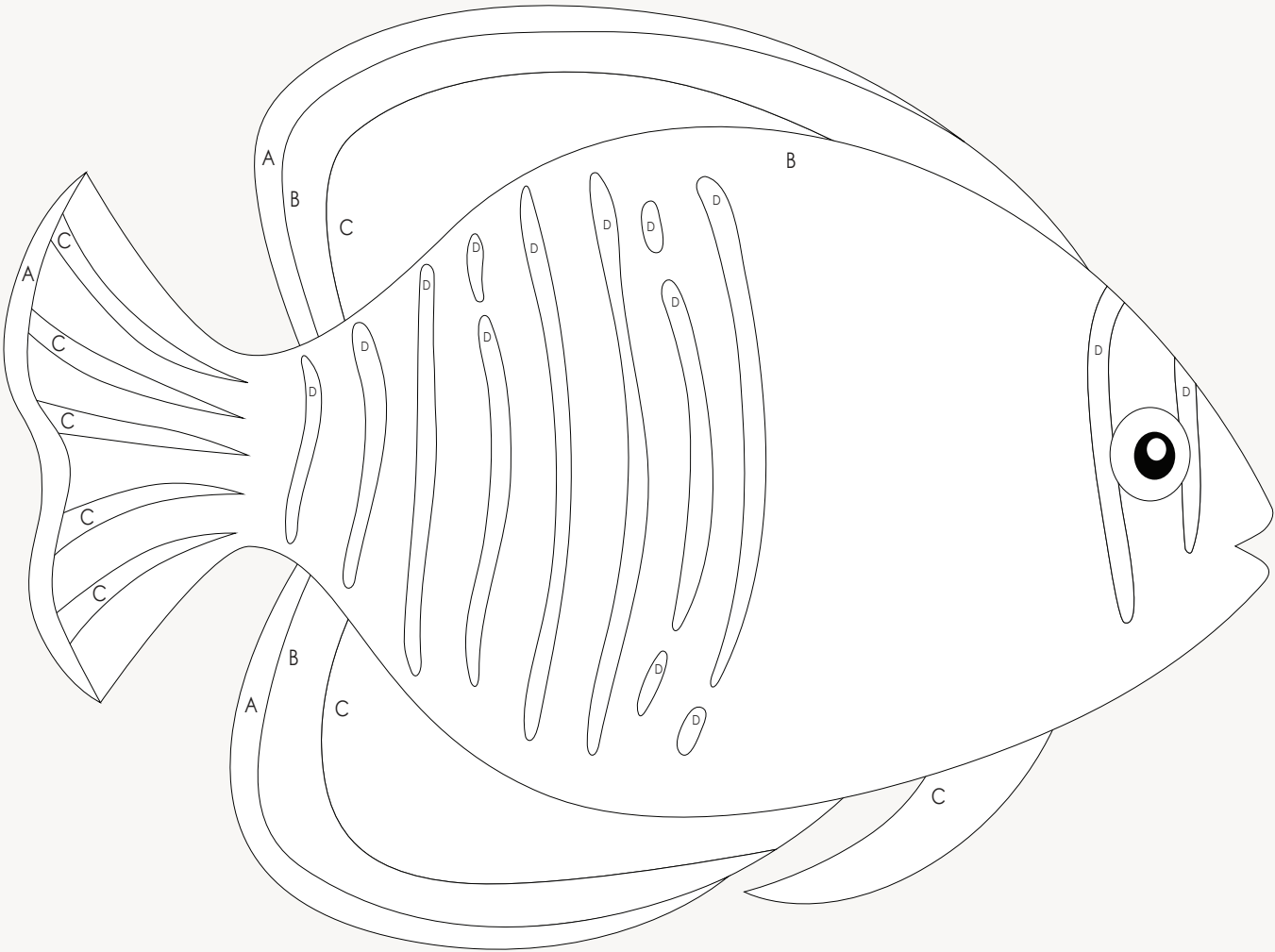
- F ● (red)
- G ● (orange)
- H ● (blue)
- I ● (yellow)



Color the house using the alphabet code :



Color the fish using the alphabet code :



A B C D E
F G H I J K L
M N O P Q R S T U V
W X Y Z

